

Ground Floors



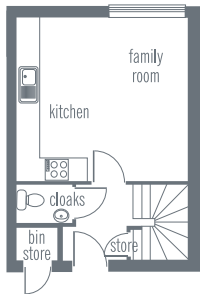
First Floors



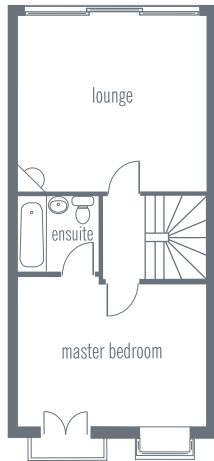
Second Floors



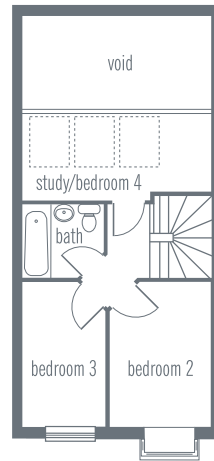
Ground Floor



First Floor



Second Floor



20 ~ 30 Riverside Houses

Kitchen/Family	4.50m x 4.30m	14'8" x 14'1"
Living	4.50m x 4.30m	14'8" x 14'1"
Bed 1+ensuite	4.50m x 3.70m	14'8" x 12'1"
Bedroom 2	3.50m x 2.40m	11'5" x 7'9"
Bedroom 3	3.40m x 2.00m	11'2" x 6'6"
Bed 4/Study	4.50m x 2.10m	14'8" x 6'9"

MILLBANK HAY-ON-WYE

www.millbank-hayonwye.co.uk

Please note: This is a typical floor plan of the riverside houses. Windows and balconies vary from plot to plot. Please refer to the main floor plans for clarification.